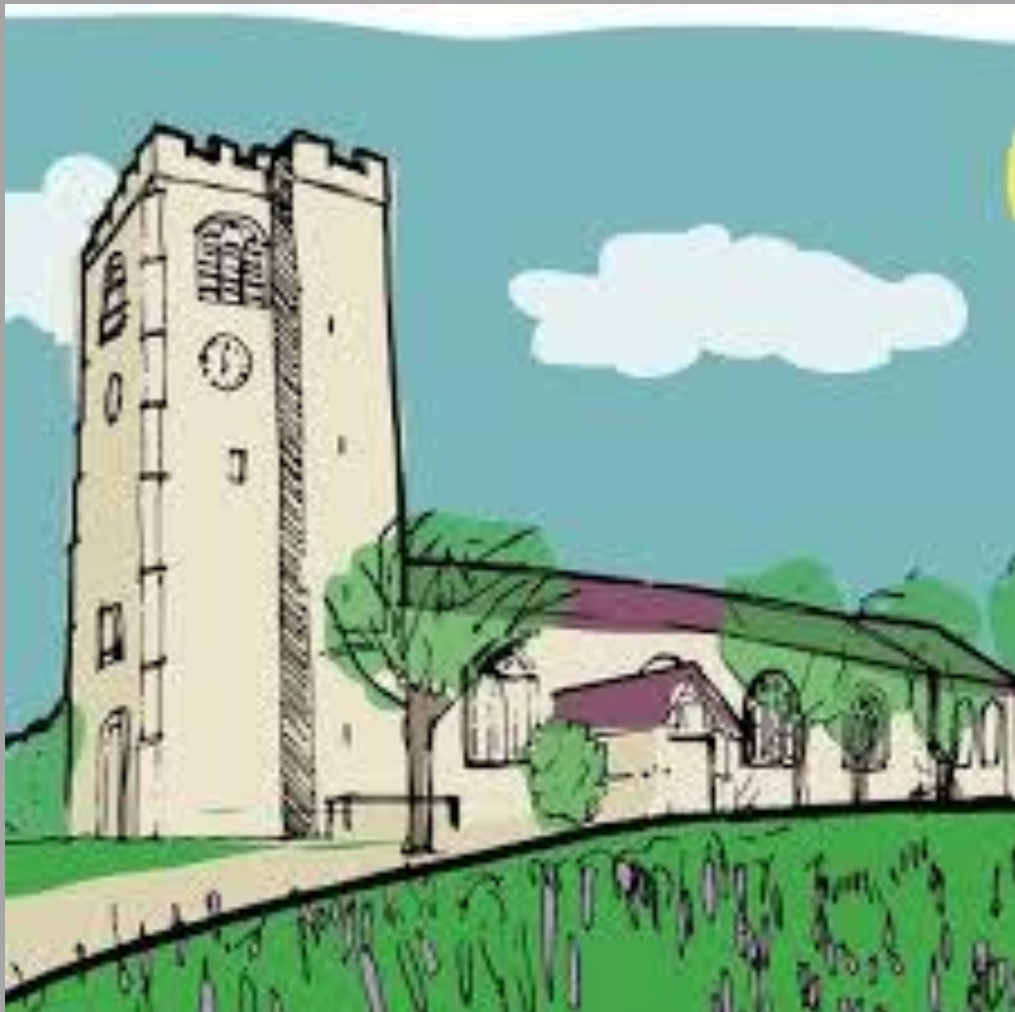


The Parish of Bolton-le-Sands Holy Trinity and St Mark's, Nether Kellet Parish Profile



INDEX

Foreword From the Diocese

Our History

- Holy Trinity
- St Mark's Nether Kellet

Church Buildings

- Holy Trinity
- St Mark's

A Warm Welcome - our services

- Our Regular Worship
- What we believe.
- Child Friendly Church
- Special Occasions

"Talking the talk and walking the walk".

- The Diocese of Blackburn
- Bolton le Sands Church of England School
- Other Christian Communities
- Churches Together
- Other Local Links

Holy Trinity – The Church in the Centre of the Village

- Where we are
- Demographics
- Holy Trinity Audit – 2017

Parish Organisation and Current Status

- Summary of Finances.
- PCC
- Status of the buildings
- Social media and Communications

Where do we go from here?

- Blackburn Diocese – Vision 2026
- Holy Trinity Mission Action Plan
- Our New Vicar
- A New Home – The Vicarage

OUR PRAYER



Foreword from the Diocese of Blackburn

Our History

Holy Trinity Church is in the village of Bolton-le-Sands, Lancashire. It is an active Anglican parish church in the deanery of Tunstall, the archdeaconry of Lancaster and the diocese of Blackburn. Its benefice is united with that of St Mark's, Nether Kellet.

Holy Trinity is the oldest church in the village and is listed II*. The church and its mission of preaching the Gospel has existed on this site since at least 1094 and has survived up to the present day. There is evidence of Anglo-Saxon use on the site based on the survival of sculpture from that period. The remains of what is thought to be a six-foot-high preaching stone cross is kept on display in the tower area. Viking burial stones recovered from the local area are on display in the oldest part of the church, the tower, which is of pre-Norman origin. There was a major refurbishment in 1880 and various improvements during the early 19th century. The magnificent church organ was installed in 1863.

Use the QR Code to take a tour of the church and grounds:



Holy Trinity - Bolton-le-Sands

In recent times we had lead stolen from the roof gutter in 2017. This theft initiated a project called 'Raise the Roof and Open the Door' which was funded by the Heritage Lottery Fund; other charities and a significant contribution from the local community. During the project major areas of dry rot were exposed, the affected areas were replaced, and the remaining woodwork was treated. Half of the Nave and North Aisle roofs were replaced, and the roof gutter was re-made in stainless steel. During that project we installed a new inner door and automatic glass doors to encourage people to enter church. The internal decoration was completed.

In 2020 a new Kitchenette and an additional, accessible toilet were installed, along with CCTV and an improved sound system.



St Mark's - Nether Kellet

The church of St. Mark's is one of the smallest churches in the area. Erected in 1878 by John Lee Booker of Swarthdale House. On the north wall of the Church, there is a memorial to the men of the village who served in both World Wars. Nether Kellet is one of only 13 Doubly Thankful Villages in the UK where all those who left for war returned.

Though its congregation numbers have naturally been small, a recognition of the need for redecoration and renovation came in 1978 when several faithful members came together and contributed their time and skills at no cost to get it back to rights for a centenary celebration that year. After a magnificent concerted effort the successful completion was marked by a celebratory procession down the main street headed by the then Bishop of Lancaster. The procession culminated in a centenary fete at the village playing fields and was a highlight in village life, reported in the local papers.



A Warm Welcome

Holy Trinity and St Mark's are known for their warm welcome.

Our Welcome Teams are quick to answer questions and direct people to where they can get the information they need.

Our Communion Service includes hymns, bible reading and prayer with a talk from one of the leaders at the Church. All are welcome.

The third Sunday Morning Prayer Service is prayer and bible readings and can include hymns.

Children and Families

We are a child friendly parish. There are toys, books and drawing materials for children to use at the back of church.

Second Sunday Service is our new "Contemporary, Interactive and Godly" service taking place on the second Sunday in each month. This is for all parishioners but especially families and children.

Messy Church takes place bi-monthly on the third Saturday.

Service and hymn books are available for all services.

After the main service on Sunday at Holy Trinity we meet for coffee and juice.

We have many other services and activities, for all ages, to get involved with

Our Regular Worship

Prayer and worship is at the heart of the parish.

Holy Trinity Church meets every Sunday at 10.30am for our Sunday Services and at 10.00am on Wednesday.

The 10.30am Communion service is a service for all ages. We use the service booklet appropriate for the season. The music is wide ranging from the very traditional to the very modern. We have an audio visual system which can be used to show the latest hymn videos (Stuart Townend, Hillsong Worship, Leeland.) We love reflective hymns from Taize and Iona.

Readings and prayers are led by the congregation and we have a number of "Occasional Preachers" in the parish who support the vicar in doing sermons.

The Wednesday 10.00am service is a simple service of Communion with a hymn. As with the Sunday 10.30 service, readings and prayers are led by the congregation.

St Mark's Nether Kellet has a service of Communion with hymns each Sunday at 9.00am.

Services can be in church or online and often both. Zoom provides us with an outreach locally and internationally.

NB. CURRENTLY, ALL SERVICES MAY BE AFFECTED BY COVID RESTRICTIONS.

THE CALENDAR ON OUR WEBSITE HAS UP TO DATE INFORMATION.



WHAT WE BELIEVE

For us, church isn't a building, church isn't an event – church is about a community of people praising God together. We believe that we are so much better together

Christian life is lived in relationship with God through Jesus Christ and, in common with other Christians, seeking to deepen that relationship and to follow the way that Jesus taught.

Central to that relationship is knowing we can trust God. Saint Paul says at the end of the eighth chapter of his letter to the Church in Rome, 'if God is for us, who can be against us?' And this is the heart of faith.

How do we know that 'God is for us? Because Jesus Christ, the one human being who is completely in tune with God – with what God wants and what God is doing – has carried the burden of our human betrayals of him, and our running away from goodness. He let himself be betrayed and rejected, executed in a humiliating and agonising way, and yet has not turned his back on us. Death did not succeed in silencing him or removing him from the world. He is alive; and that means that his love is alive, having survived the worst we can do.

Child Friendly Church



We love children. They are our present and future of the parish and they bring youthful light and joy to our church.

We have a regular service on the Second Sunday of the month for families which is “Contemporary, Interactive and Godly.” This is run by our special Second Sunday team.

Each alternate month we have “Messy Church” for young families.

Special services such as the Christingle Service and Easter Service are also great fun for young parishioners.

Bolton le Sands School visit regularly for services and activities in the church.

We would like to do more!

Celebrations at Holy Trinity and St Mark's

There are many special occasions in the life of our churches that we like to celebrate. Remembering always births, marriages and deaths.

Services	Other Events
Christingle Service	Local Choir Concerts
Nativity Service	Men's Breakfast
Carol Services	Lenten Lunches
Thy Kingdom Come Course	Community Coffee Mornings
Week of Prayer for Christian Unity	Spiritual Study Days
First Friday Service	Confirmation Courses
Messy Church	Lenten Ecumenical Seder Meal
School Leavers Service	
Mothers Union Wave of Prayer	
Remembrance Service	
World day of Prayer	
Lent and Advent Courses	
Second Sunday Family Service	
Easter Morning Beach Service	

***“Talking the
Talk
Walking the
Talk”.***

***How we relate
to the wider
Community***

- **Our Diocese**
- **Our School**
- **Mothers Union**
- **First Tuesday Hub**
- **Other Christian Communities**
- **Churches working Together**
- **BLS Neighbourhood Watch**
- **Bolton-le-Sands Parish Council**
- **The Village Fete**
- **The Children’s Society**
- **Supporting Projects Overseas**
 - **Mothers Union**
 - **Christian Aid**
 - **USPG**
 - **Toilet Twinning**



Bolton-le-Sands Church of England Primary School is a delightful school set within lush grounds with a commitment to being central to our community. At Bolton-le-Sands, we believe that God is at the centre of all that we aim to achieve and, as such, we reach out to support each other in learning, growth and community. It is our goal to ensure that all members of our wide school family are welcome and are given the opportunity to know God, and know us. Our school is a happy and caring place where everyone is valued and we welcome the prospect of a new priest becoming part of our school family. When asking our pupils about what kind of priest they would like, they said:

"Someone who is kind, fun, approachable, has a good sense of humour and smiles."

"Who makes Collective Worship exciting and interactive, bringing in things to show us."

"Who teaches us more about the church, our community and God."

"A person that we get to see and talk to and acknowledges us."

"We would like a vicar who includes everyone no matter their age."

We are passionate in working together and we look forward to learning more about our new priest of Holy Trinity.

Our 'SIAMS' inspection (March 2018), which focused on our worship provision, R.E. teaching and learning, ethos and behaviour, leadership and management and distinctiveness as a church school, rated our school as OUTSTANDING OVERALL. With a new Senior Leadership team in place, we are now looking to further develop the links between our school, our Parish Church, and our wider community.

As well as involvement in school worship and the pastoral care of pupils and staff, the Vicar is an ex-officio Foundation Governor, and as such we hope that they will take a full and active role in the governance of the school.





The Diocese of Blackburn provides us with leadership and support. “Vision 2026” inspires us:

“Healthy Churches Transforming Communities”

- Making disciples of Jesus Christ”.
- Being witnesses to Jesus Christ.
- Growing leaders for Jesus Christ .
- Inspiring children and young people to raise up a new generation for Christ.





Since 1876, when Mary Sumner first brought together parents in her own parish to build their confidence in bringing up their children in the Christian faith, Mothers' Union has grown to over 4 million members worldwide. Their members work around the world bringing hope and practical support to millions of people every year through our parenting, literacy and community development programmes and as part of the volunteer base of local churches.

- Active in the parish for 125 years.
- 50 members
- Open to women and men.
- Supporting the parish baptism programme
- Supporting the diocesan holiday caravan in Morecambe for families in need.
- To demonstrate Christian faith in action by the transformation of communities worldwide through the nurture of the family in its many forms.
- To promote and support married life.
- To encourage parents in their role to develop the faith of their children.
- To maintain a worldwide fellowship of Christians united in prayer, worship and service.
- To promote conditions in society favourable to a stable family life and the protection of children.
- To help those whose family life has met with adversity.

Other Christian Communities



St Mary of the Angels – Catholic Church.

The Church of St Mary of the Angels was built in 1882-4. Linked with the neighbouring parish of Our Lady of Lourdes and St Mary's Yealand Conyers. The three parishes are served by Canon John Gibson (Parish Priest).



Christ Church – URC

The most modern church in the village was opened in 1935. Part of the Lancaster North Team ministry. A new minister has recently been appointed Rev. John Gordon. Miss Audrey Shaw is the secretary.



The Monastery of our Lady of Hying – Warton

Special mention must be made of “Hying” as it plays a vital role in the life of our church. Run by the catholic nuns of the Bernardine Cistercians of Equesmes. It provides retreats and courses which are regularly attended by members of the parish.

Churches Together.



There are a number of times in the year where we come together as churches in the village.

World Day of Prayer

Lenten Seder Meal

First Service of Easter on the Shore

Remembrance Day

Mothers Union Teas

Catholic Women's League afternoons

Monthly Men's Breakfast

Monthly First Friday Service

Advent Festival

Village Fete

Other social activities



Since March 2019, in response to the Covid Epidemic, parishioners of Holy Trinity Church set up the village Neighbourhood Watch Scheme.

Where people can come along to enjoy friendship, refreshments, and receive specialist advice from professional organisations e.g. Age UK, CAB Dementia UK



Supporting those in need locally.

Bolton-le-Sands Parish Council is the administrative authority for Bolton-le-Sands.



Bolton Le Sands Gala

The BIS Gala is held annually, on the first Saturday in June. The Gala gives our church visibility as part of the village.

Supporting The Children's Society with household collecting boxes, provided by the charity, and the Christingle Service at Christmas



Holy Trinity

“The Church in the Centre of the Village.”



WELCOME TO OUR FAMILY FRIENDLY CHURCH

THE PARISH OF
HOLY TRINITY
BOLTON LE SANDS

Sundays
8.00am - Holy Communion
10.30am - Holy Communion

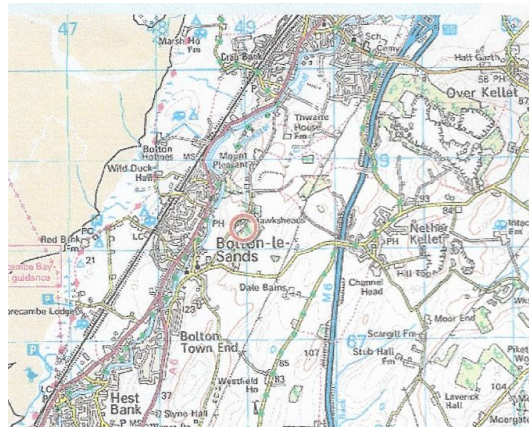
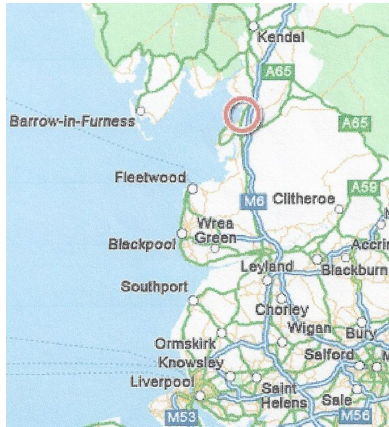
Wednesdays
10.00am - Holy Communion

See the notice board for additional services
or visit our website - www.bolton-le-sands.org.uk

Vicar: The Reverend Nancy Goodrich - 01524 823106
117 Main Road, Bolton-le-Sands, Carnforth, Lancs, LA5 8DX

THE CHURCH OF ENGLAND

Where we are.



The parish of Holy Trinity, Bolton-le-Sands and St Mark's, Nether Kellet is in the north of Blackburn Diocese, situated close to the shore of Morecambe Bay, some 3 miles from Lancaster to the south and Morecambe to the west. Within the parish are the two villages of Bolton le Sands and Nether Kellet.

During the 20th century, Bolton-le-Sands developed from its ancient roots into one of the largest villages in Lancashire. The 2011 census gave the population as 4127, but this has increased since with the recent development of two new housing estates. The village has developed in linear fashion, following the north/south routes of the A6, the M6, the main west coast railway line and the Lancaster canal. The village has a modern and well used Community Centre, as well as a number of small shops, a doctors' surgery and pharmacy, a library, post office and several pubs and restaurants. The village school is a Church of England Aided Primary School. There are active uniformed groups for young people. Locally, employment opportunities are limited within the village, and most working people commute daily within the Lancaster/Morecambe area or further afield to Kendal or Preston.

Access to the M6 is very easy, with Junction 35 some 3 miles to the north through Carnforth, and Junction 34 within easy reach via the newly opened Bay Gateway.

The nearest mainline railway station is Lancaster. Local train services run from stations at Morecambe and Carnforth.

The smaller village of Nether Kellet lies on the eastern edge of the parish. It is a much smaller village with a population of 656 according to the 2011 census. There is a Community School in the village, a Village Hall, a small shop and a pub. There is also a Congregational Church. There is a wider farming community surrounding the village, and some of the residents are employed in the farming industry.

PARISH DEMOGRAPHICS

Gender



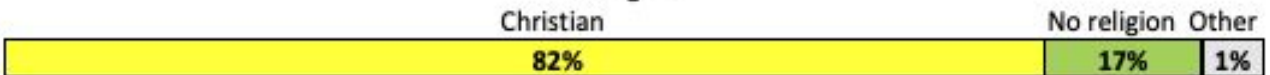
Age Range:



Ethnic Origin:



Religion:



Source: National Office of Statistics (Dec 2019) and 2011 Census.

OUR CHALLENGE: OUR OPPORTUNITY

82% of the residents of the Parish described themselves as 'Christian'. This is about 3500 people. We believe that the average weekly attendance at Holy Trinity, St Mark's, St Mary's and Christ Church URC is at most 200. Even at the Christmas and Easter festivals, only about 10% of Christians within the parish attend a church service. How do we get the other 90% to come to church and become part of our worshipping community?



Holy Trinity Audit - 2017

In 2017, we carried out a Healthy Church Audit, following our involvement with 'Vision 2026' the previous year.

We used a questionnaire based on the '6 signs of a Healthy Church' and invited the congregation to rate each one as:

- 1 this needs further development
- 2 meeting some of the criteria
- 3 this is a strength

The questionnaire was anonymous, and was used mainly at a 10.30am service (ie the principal service at Holy Trinity), although copies were available at other services (8am Sunday, 10.00am Wednesday).

The results of the questionnaire showed that the congregation felt that :

Needing Further Development	Meeting some of the Criteria	This is a Strength
Clear vision that gives direction to the church's ministry and mission	Inspiring worship and dynamic prayer that connects and engages; Positive leadership encouraging collaborative ministry Encouraging active, generous discipleship; Intentional outward looking focus.	A strong sense of warm, open community.

An new audit is planned post the Covid Crisis

Audit Demographics

Respondents were invited to share some personal details. Although the sample was relatively small (about 50% of the regular Sunday congregation), the responses bore out the anecdotal evidence at that time:

- 85% of the congregation were in the 'over 50' age group; of the other 15%, none were in the under 30 age group.
- 85% said they came to church every week – these were almost all the same people in the over 50s group. The remaining 15% said they came once a month.
- 50% of the congregation said they had been coming to church for 20 years or more.
- 80% of the congregation said they had lived in the local area for 20 years or more.

CAVEAT : Since this audit was undertaken, we have seen the introduction of bi-monthly 'Messy Church' service and the monthly Second Sunday Service, both of which attract young families. Because of the COVID closures and other restrictions, it has not been possible to carry out another similar audit, because physical attendance in church has been restricted, and it is difficult to know how many people have participated via the Zoom link.

Further Statistics.

DATABASE (GDPR) (September 2021)	QTY
Electoral Roll	135
Zoom Email Database	178
Parish Addresses Database	486
Covid Attendance Log (Adults)	166
Covid Attendance Log (Children)	36
Mothers Union Membership	50
Men's Group	31
Social Team	32
Neighbourhood Watch	65

Parish Organisation and Current Status



Summary of Finances

Over the past four years the Parish finances have been sound, with all expenses, including the Parish Share, having been covered. This was, and is, a most welcome trend as in previous years a large deficit in Parish Share payments had built up. Additionally, in the same period, expenditure in excess of £400,000 has been made on repairs and upgrades to the fabric and facilities of Holy Trinity. Whilst the majority of the finance for this came from grants, there is no doubt that none of it would have been undertaken without substantial contributions from the congregation and local community, both in terms of volunteer help and cash gifts. More detail about these figures can be found by accessing our audited accounts on the church website.

It will be no surprise that the coronavirus pandemic has had a major, detrimental, effect on our income and a challenge remains for us to meet obligations in 2021 – at the time of writing we are estimating a shortfall of about £20,000. However, a similar outlook was foreseen in each of the previous two years and the congregation responded most generously to ‘one-off’ appeals for donations and fundraising. Similar appeals are being planned for the second half of 2021.

The bedrock of our income is the Planned Giving scheme, and the majority of this is now made by standing order. We estimate that over 90% of the regular congregation are part of the scheme, and all ‘Giving’ accounts for over 70% of total income on average.

The General, day-to-day, Reserve is maintained at the minimum prudent level of £5,000, with any additional income being committed to Parish Share. We have a number of Restricted and Designated Reserves, the main ones being used for any further expenditure on fabric – Holy Trinity is a grade II listed building and there are outstanding works that need to be addressed. St Mark’s, whilst much smaller, does have its own challenges in this respect.

Despite these challenges we are optimistic about the future, with a strong, multi-talented leadership team and enthusiastic congregation.

For more details of our 2020 Report and Accounts use the QR Code:



Parochial Church Council

Church Wardens

Peter John Davies

Mary Bunting (Safeguarding Officer)

Secretary to the PCC.

Ann Basham

Finance

Andy Hampshire

Russell Longton

Fabric

Brian James

Rob Daunt

Social and Communications

Andy Williams

David Bateman

Duncan Johnson

St Mark's

Robert Whittaker

Margaret Hutchinson

Bolton le Sands School

Kath Brough

Vision Champion and Outreach

Margaret Foster

Holy Trinity The Church Building.



The 2017 quinquennial inspection is up to date with the only category 'A' items being the sliding door to the tower roof and the bell tower louvres. The sliding door issue requires some minor joinery work. The bell tower louvre blades have suffered stone erosion and will have to be replaced. A quote of £22,511 has been received for the work, however there are insufficient funds in the fabric account to finance the work. The louvre blades have been restrained and the area beneath is barriered off for safety. A National Churches Trust application has been made for the balance of money to allow us to complete the louvre work, we are currently awaiting their decision.

Use the QR Code for more details:



St Mark's. The Church Building.



Saint Marks Nether Kellet is a small building with duo-pitch slate roof and limestone rubble walls. A porch on the south elevation accessed via a short path through the church yard from the gate on the public road. A bell cote at the west end of the ridge. On the north side, at the west end, there is a small vestry. The building is not listed.

The 2018 quinquennial inspection is up to date with no category 'A' items outstanding

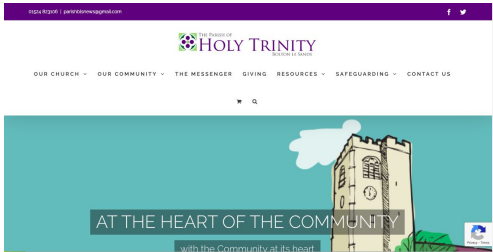
The church was built in 1878 on land given for the church's use by John Booker. As Nether Kellet was already under the incumbency of the Vicar of Bolton-le-Sands, the church was automatically part of the parish from its consecration.

There are some cosmetic improvements now needed as well as some minor repairs, but our greatest obstacle at the moment is the lack of facilities and the current members of the congregation have been looking into ways that a toilet etc. may be acquired.

Use the QR Code for more details:



Social Media and Communications



Visitors to our Website
(last 12 months)
14.89k

“@parishbls” Facebook
Page
551 followers.
4,848 Reach



Monthly Newsletters
280 Subscribers

Weekly Email “The Link”.
(Printed out for parishioners not
on the internet)



176 Subscribers to our online
broadcasts and services

Where do
we go from
here?





What is Vision 2026?

'Healthy Churches Transforming Communities'

We desire to make the Good News about Jesus Christ more widely known, because we believe:

- He is the One who brings 'life in all its fullness'
- Healthy church communities have a positive and transformative impact on our society.

We will work together to achieve this by:

Making disciples of Jesus Christ

- Knowing the Scriptures better through reading, teaching, preaching and study
- Praying with greater depth and urgency for the Kingdom of God to come
- Worshipping in spirit and truth
- Giving generously of our time, talents and money to the cause of Christ

Being witnesses to Jesus Christ

- Sharing the Gospel of salvation with confidence
- Meeting human need: actions as well as words
- Planting 10 Strategic Church Plants and 200 New Local Congregations
- Caring for God's creation

Growing leaders for Jesus Christ

- Developing a diocesan-wide culture of vocational discernment so that all may hear God's call and use their gifts in the service of the Gospel.
- Discerning and forming theologically literate lay and ordained leaders, rooted in prayer and with a deep love of the Lord Jesus
- Nurturing a healthy partnership between clergy and laity by fully implementing the Lay Majority Ministry framework
- Forming and supporting a pipeline of highly motivated deacons and priests in order to enable the Diocese's clergy deployment strategy

Inspiring Children and Young People to raise up a new generation for Christ

- Discipling and nurturing children and young people in their Faith
- Holding regular worship that is accessible and appealing to children and young people and their families.
- Enabling growth in the numbers of leaders of children and young people
- Leveraging a step change in ministry with those aged 11-16
- Facilitating effective partnerships between churches and schools

Holy Trinity - Mission Action Plan.

In the Autumn of 2016, the PCC decided to adopt a Mission Action Plan for the next five years to give a sense of direction to the church. In 2021 this remains our current focus.

Community Engagement

- Serving the community
- Building on existing links
- Developing work with school
- Developing work with young people and families
- Celebrating special occasions

Spiritual Growth

- Prayer
- Bible study
- Short courses
- Worship
- Messy Church

Developing leaders

- A culture of thankfulness
- Recognising gifts and talents
- Inviting people to participate
- Mentoring and working together
- Celebrating leaders

The Three Pillars

Focus for re-growth post covid.



Children
and
Young
People

Discipleship

Pastoral
Care

1) Children and young people:

- a. 10.30am services to be welcoming for children and young people
- b. Christenings ministry restarts – Christenings Team.
- c. Messy Church restarts – Jess Squires to coordinate
- d. Second Sunday Service restarts
- e. Relationship with school children, families and staff re-grows, e.g.:
 1. Communications – inc church things in weekly school newsletter
 2. Leavers service in church.
 3. Meeting new starters and families (invite to school harvest)
 4. Weekly engagement/worship (Church led worship every Thursday)
 5. Eucharist in school (has been 6 times a year) or school in church.
 6. Year seven reunion service.
 7. Harvest inc on Sunday and school's own harvest service in church
 8. Stories of people Jesus helped with reception class in church
 9. Advent and Christmas – Christingle/schools own carol service
 10. Confirmation group
 11. School/Church days eg The Trinity
 12. Relationship with Pre-School re-grows:
 - i. Communications - invites to Messy Church etc
 - ii. Harvest for Pre-School and families in church
 - iii. Christmas for Pre-school & families in church

2) Discipleship & deepening prayerful faith

- a. Helping people grow in faith and share their faith
- b. Encouraging people to know and use their spiritual gifts
- c. 3rd Sunday service to focus on deepening faith
- d. House Groups – rebooting and growing a new one. Use zoom?
- e. First Friday – House groups leading.
- f. Prayer inc an autumn seminar with visiting leader

3) Pastoral care

- a. Caring for the parish and parishioners
- b. Praying with/for each other and those in need
- c. Pastoral care and nurture with the school

Comments from the Parish and Local Community (including Social Media Comments.)

OS - " I would say someone that is open minded to all cultures and faiths."

RS - "...They should easily relate to the pupils who are the future of the village."

SB - "They should welcome children at the church and promote the church as a community hub for all."

CJ - "Friendly. Welcoming. Child friendly."

JF - "Sincere person who relates well to individuals and becomes part of the community."

LB - "We do well at Bolton-le-Sands Parish church at welcoming people . We could improve on closer links with the children and other churches

Our new vicar should be friendly and approachable."

See more by clicking on the QR Code



Our New Vicar.

- Strong faith in the word of God and his teachings through the Bible.
- An evangelical desire to spread the love of God.
- Great interpersonal skills.
- Ability to communicate ideas effectively with humour and insight.
- Comfortable speaking in public.
- Patience and empathy.
- Good organisational skills.
- A solid grip of Christian theology and doctrine.
- Be a confident, imaginative and wise communicator and teacher of the faith who will help to develop and grow faith
- Enthuse the congregations to effectively be the Christian presence in these parts
- Encourage and develop mission in the villages
- Continue to develop lay leadership and ministries across the parishes and build team ministries
- Bring an innovative, imaginative and creative approach to helping the churches grow numerically and spiritually
- Grow and develop the ministry and involvement of the church with the village school; and work with the Heads, staff and volunteers.
- Encourage and input into the development a ministry to children and young families
- Work with the wardens and PCC to ensure the most efficient and effective structures for governance.

Views of the Vicarage



Our Prayer during the Vacancy

Heavenly Father, during this vacancy, guard and grow this parish of Bolton le Sands and Nether Kellet as we serve you together in this period without a vicar.

Lord Jesus, We know that you have plans for us and that these plans are good. We ask now that you will help us to share responsibility, grow in faith, love one another, care for those in need, reach out to others, and welcome newcomers.

Holy Spirit, Please guide those who are seeking the right person for us, and those who are seeking the right place for their ministry, that together we may discover your way for the future and see your kingdom grow.

Through Jesus Christ our Lord. Amen



The Parish of Holy Trinity. Main St, Bolton le Sands. LA5 8DU
www.bolton-le-sands.org.uk. Charity No: 1144401