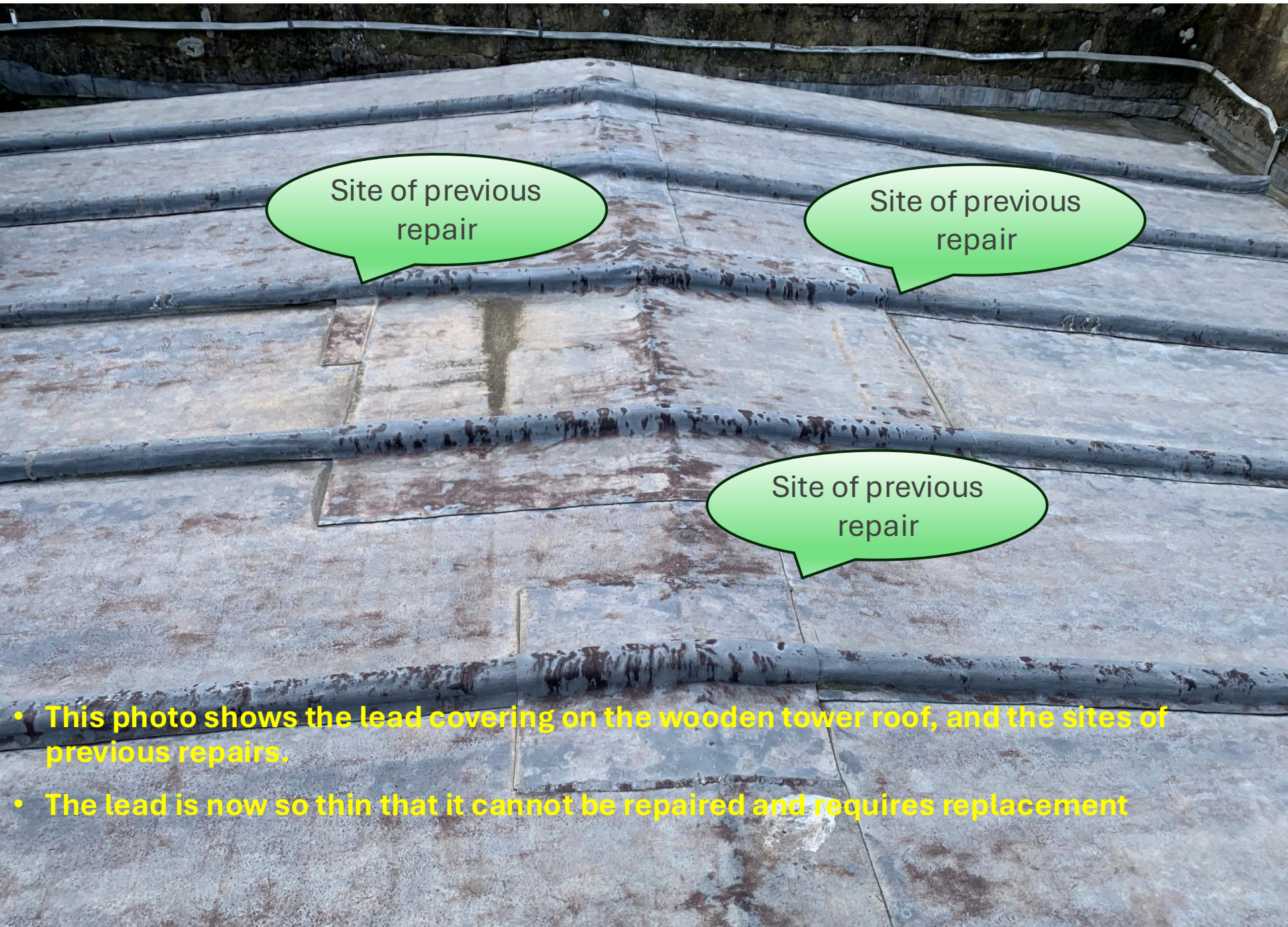


Tower Roof Repairs

The bell tower roof is the oldest part of our church dating from the 15th century and in urgent need of repair.





Site of previous
repair

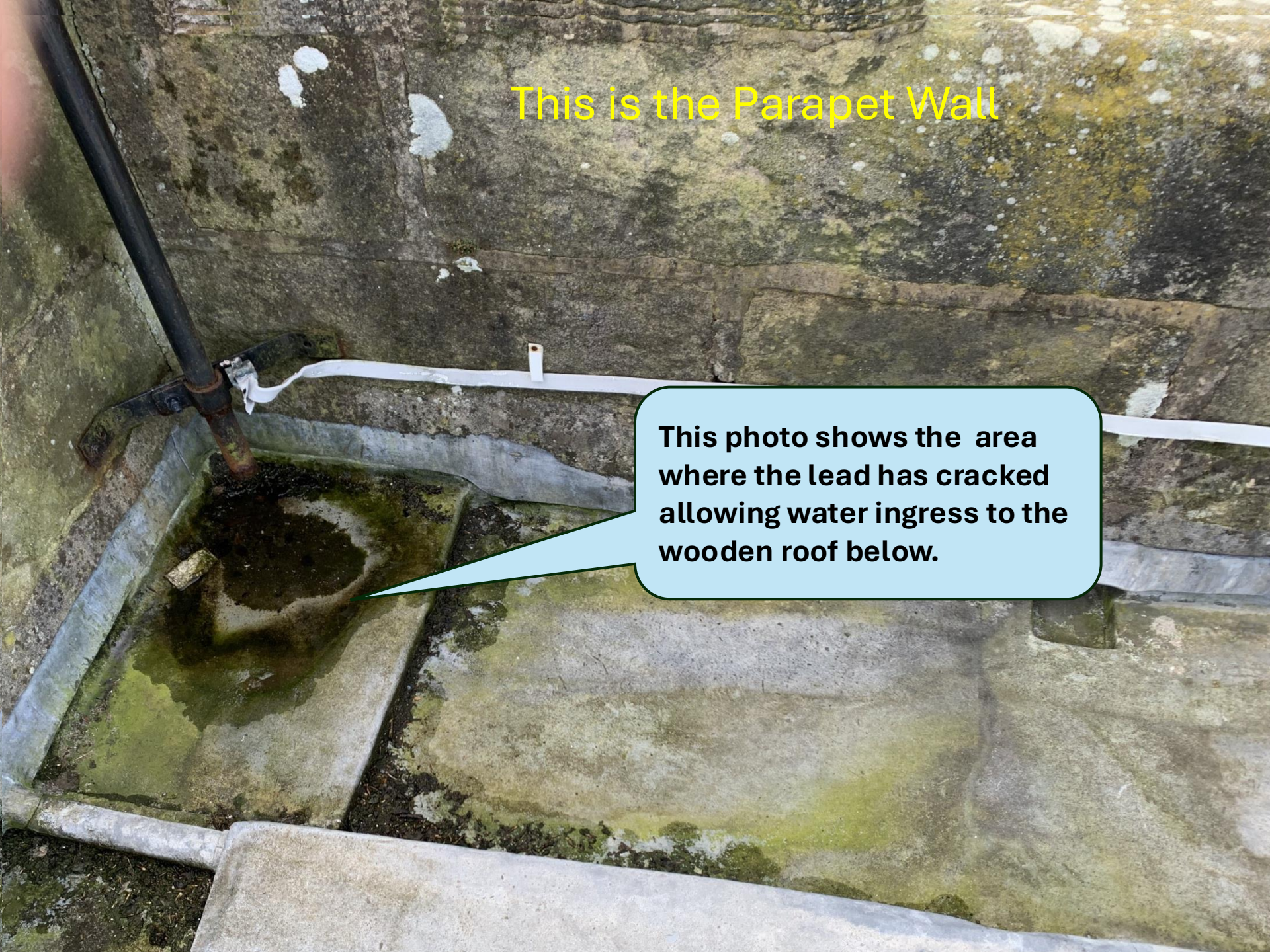
Site of previous
repair

Site of previous
repair

- This photo shows the lead covering on the wooden tower roof, and the sites of previous repairs.
- The lead is now so thin that it cannot be repaired and requires replacement

This is the Parapet Wall

This photo shows the area where the lead has cracked allowing water ingress to the wooden roof below.



The Repair Costs

- The total costs of the repairs is £51,685.00
- We have 66% of the funding secure through our financial reserves and three funding awards from the Elizabeth and Richard Wilson Charitable Trust, the National Churches Trust and the Benefact Trust.
- We have made two other requests for funding to other charitable organisations and await the outcome. (Hoping for £5000).
- We are starting a local fundraising campaign to help to achieve a target of £10,000 to enable the work to proceed.





The Repair Programme

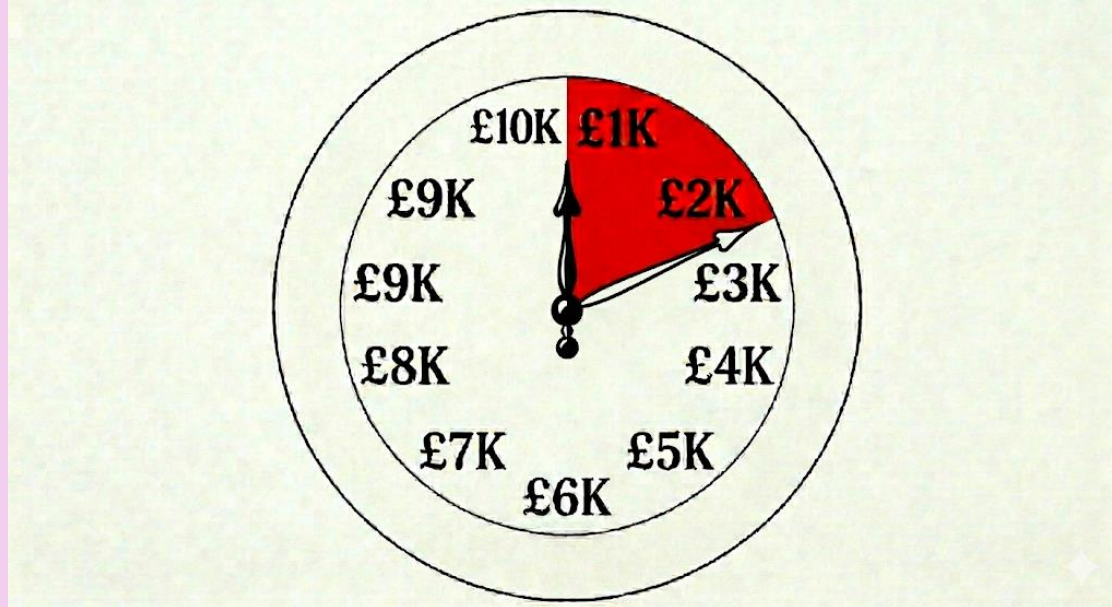
- Providing we meet our target of raising the remaining £17,000 through our local fundraising and other charitable organisations we should be able to start the work at the end of April 2026
- Failure to achieve the funds by the end of April will result in delays to starting the project and the potential for price increases, as the price of lead is volatile.

WE HAVE SOME RESERVES

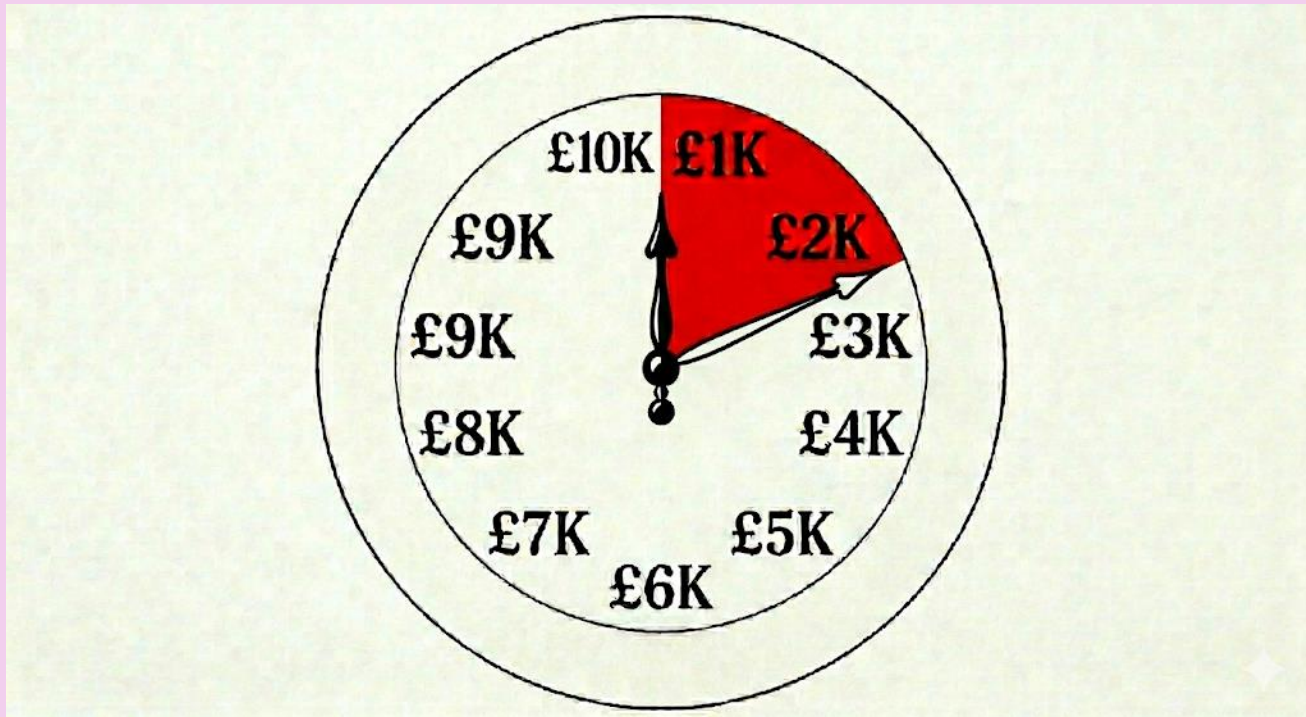
BUT WE NEED TO RAISE

£10,000 MORE.

PLEASE KEEP THE TOWER CLOCK TICKING.



£2,560 donated so far!



We need your help?

To make your contribution to the repairs.

Website:

www.bolton-le-sands.org.uk

or

To our bank:

DONATE ONLINE OR BY CHEQUE TO:

BOLTON LE SANDS PCC.

01 01 60 94801738 ,

REFERENCE 'TOWER'.

TO ADD 25% BY GIFT AID, EMAIL

treasurer@parishbls.co.uk or

07703045054

Consider making a bequest in your will.



DONATE
NOW!



